

## AN ADVISORY TO RETURNING STUDENTS REGARDING BED BUG INFESTATIONS

Dr. Stephen A. Kells

Assistant Professor  
Department of Entomology  
University of Minnesota

August 23, 2006

With the end of the summer travel season, college students (and others) should be aware that they may be bringing some unwanted guests with them as they travel back to school.

Students should carefully inspect their luggage, especially if they have been traveling this summer. Places where students may have picked up bed bugs may include hotels, hostels, resorts, or other places where there is a potential for many people to rest or sleep over time. Places where large amounts of luggage are stored may also enable bed bugs to spread.

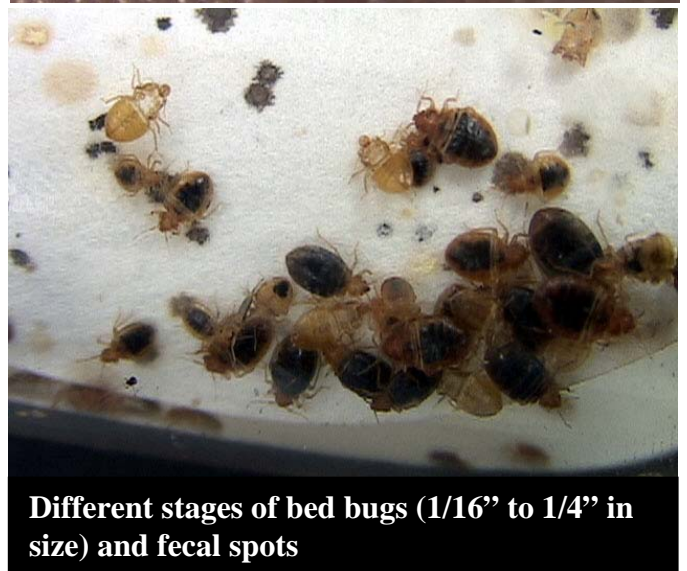
When purchasing used beds, mattresses and other furniture, students should verify that an

inspection for bed bugs was conducted by a person who is experienced with finding bed bugs on these items. If purchasing from a private vendor, make sure you have an opportunity to inspect the items. If purchasing from a place of business, verify there is a policy about inspecting and preventing bed bug infestations on the used furniture.

Students are **strongly cautioned** against “scavenging” beds and furniture that have seemingly been discarded and left by the curb for disposal, or behind places of business. Bed bug infestations are not limited to beds and mattresses, and they can be found on tables, drawers, and even electronics if these items were located in a bedroom or other place that could support an infestation.



Adult bed bug (Scale in 8ths of an inch)



Different stages of bed bugs (1/16” to 1/4” in size) and fecal spots

If a bed bug infestation is found, a professional pest management company should be contacted for proper control measures. Control practices against these secretive pests must be detailed and extensive, because of some peculiar behaviors that have been encountered with some infestations. Most of the bed bugs will be located around areas where people rest, but a percentage of bugs will move away from these sites to “hide” in more remote areas. If people do not address these “remote bugs”, an infestation will continue.

For more information regarding bed bug identification, behavior and control, please see the website: [www.ipmctoc.umn.edu](http://www.ipmctoc.umn.edu) .



**Bed bugs on a backpack**



**Bed bugs and fecal spots along a mattress seam**

Copyright © 2006, Regents of the University of Minnesota. All rights reserved.

The information given in this publication is for educational purposes only. Reference to commercial products or trade names is made with the understanding that no discrimination is intended and no endorsement by the University of Minnesota Extension Service is implied.

In accordance with the Americans with Disabilities Act, this material is available in alternative formats upon request. Please contact the University of Minnesota Extension Service Distribution Center at (800) 876-8636.

The University of Minnesota Extension Service is committed to the policy that all persons shall have equal access to its programs, facilities, and employment without regard to race, color, creed, religion, national origin, sex, age, marital status, disability, public assistance status, veteran status, or sexual orientation.